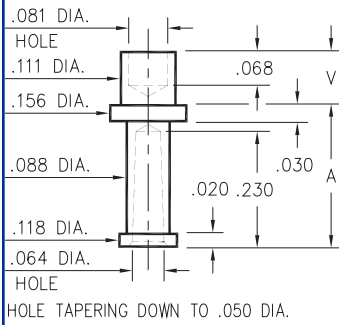


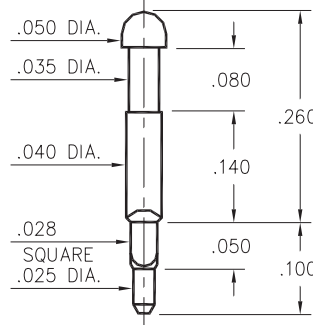
2709



2709-X-07-XX-00-00-07-0
Swage mount in .116 hole

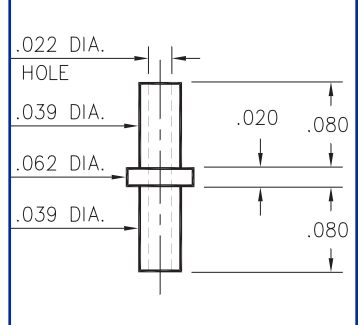
- X -	Board Thickness	Length V	Length A
2	.062	.109	.281
3	.094	.141	.250

8602



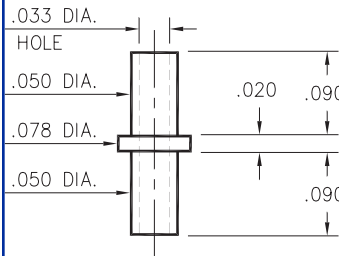
8602-1-00-XX-00-00-07-0
Square press-fit in .032 plated thru hole

2115



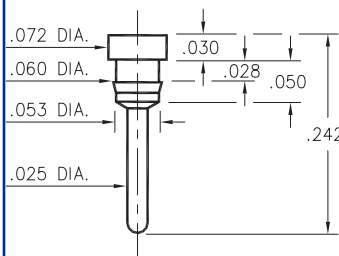
2115-2-00-XX-00-00-07-0
Swage mount in .043 hole For .062 thick board

2326



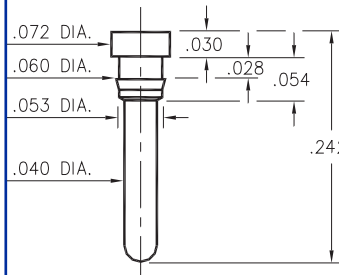
2326-2-00-XX-00-00-07-0
Swage mount in .055 hole for .062 thick board

8831



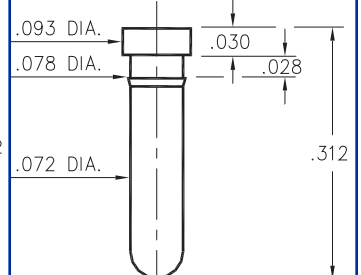
8831-0-00-XX-00-00-03-0
Press-fit in .057 mounting hole

8835



8835-0-00-XX-00-00-03-0
Press-fit in .057 mounting hole

8836



8836-0-00-XX-00-00-03-0
Press-fit in .075 mounting hole

SPECIFICATIONS

PIN MATERIAL:
Brass Alloy 360, 1/2 Hard
Swage pins are annealed

DIMENSION IN INCHES
TOLERANCES ON:
LENGTHS: ±.005
DIAMETERS: ±.002
ANGLES: ± 2°

ORDER CODE: XXXX - X - 0X - XX - 00 - 00 - 0X - 0

BASIC PART #



SPECIFY PIN FINISH:

- 01** 200µ" TIN/LEAD OVER NICKEL
- 80** 200µ" TIN OVER NICKEL ◊
- 44** 300µ" SILVER OVER COPPER ◊
- 50** 300µ" ELECTRO-SOLDER (60/40 SnPb)